

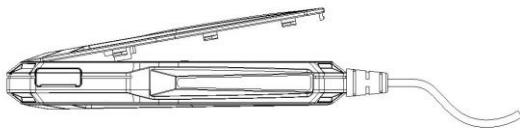
A13 User Manual



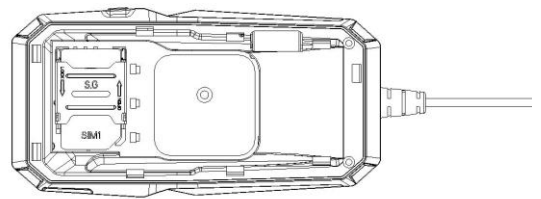
Please read the instruction manual before use, in order to properly installed and rapid use. The color of the product please refer to the actual product.

1. Method

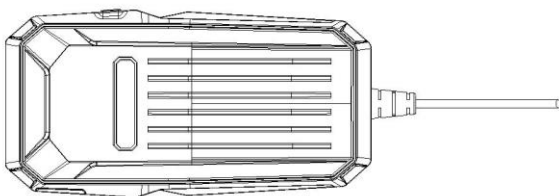
1. Before use, please test equipment model is correct, accessories are complete.
2. In shutdown state insert support GSM network SIM card(GSM 850,900,1800,1900MHZ) and open the monthly flow(not less than 30m/month traffic package).
3. Start: Intelligent start, connect to the power then start to work, or press on the power button for 3 seconds or more, then powered on.
4. SIM card installation method



1. Open the top cover



2. Insert the SIM card



3. Close the top cover

5. Terminal installation method

Terminal installation way is concealed installation, the concealed installation of the terminal is recommended to be installed by professional organization designated by the distributor, pay attention to the following issues:

1. In order to avoid thief destroy, the position of the equipment should be hidden as far as possible.
2. Avoid to be put together with emitters, such as reversing radar, burglar alarm or other vehicle communication equipment.
3. Can use cable tie to fasten, or use wide sponge strong double-sided tape to stick.
4. Device built in with GSM antenna and GPS antenna , when installed please ensure the position upward(the sky), also no metal block shielding at above, recommend installation locations:
 1. Hidden place below the front windshield decorative board
 2. Hidden place around the front dashboard(Surface for non-metallic materials)
 3. Hidden place below the rear windshield decoration board.

2. Wiring definition

Linear order	Definition	Color	Wiring instructions
1	Positive pole	Red	Connect to positive pole
2	Negative pole	Black	Connect to negative pole
3	ACC	White	Connect to positive pole or ACC switch

3. Product function

1. Real-time positioning
2. Historical route
3. Geo-fence
4. Multi-platform monitoring: Support andorid ,apple mobile phone system, computer network clients, etc. Support SMS command.
5. Universal: four frequency support GSM network , built in global online parameters

4. Equipment parameters



Positioning : GPS satellite positioning +AGPS auxiliary positioning +LBS base station positioning

Positioning accuracy : GPS location 5-15m Base station position 100-1000m

Device size : 92×43×14mm

External power supply voltage range : 11-50V

Battery capacity : 350mAh

5. Function declaration

5.1 Real time tracking

Real time tracking function, users could see the position and status of the tracker from the map on APP in cell phone. Tracker according to the setting interval time through server sending location message to APP, the location what users saw is the position that the time locator on the APP.

5.2 Historical route

This product can keep three months of route information, if two anchor point position is very close, this product will be in the route filter position very close point.

5.3 Geo-fence

Users in the cell phone APP to choose Geo-fence function, set round gen fence on the map, if the device away from fences, mobile phone APP will display the alarm information.

Alarm information time is related to the positioning interval time setting, the smaller the positioning interval time can get more timely alarm information.

6. Key description

When shutdown state with enough power, long press power button and locator will start up.

When powered on and no connect to external power, long press power button and locator will shut off.

7. Light effect show

Red LED is power status indicator, blue LED is GPS status indicator, yellow LED is GSM status indicator.

With external power supply, side key function is to put out the three LED. With internal power supply, side key function is to shut off.

Red LED power working status indicator

Light status	Implication
Quick flash (light 0.1 second , dark 4 seconds)	Normal working

Slow flash (light 1 second , dark 2 second)	Low power
No light	Shutdown/Internal error

Blue LED-GPS status indicator

Light status	Implication
Quick flash (light 0.1 second , dark 4 seconds)	GPS positioning
Slow flash (light 1 second , dark 2 seconds)	Search GPS signal
No light	GPS no positioning

Yellow LED-GSM status indicator

Light status	Implication
Quick flash (light 0.1 second , dark 4 seconds)	GSM / GPRS session start
No light	No GSM signal

8. Software client-side

8.1 Scan the QR code download software APP “Yi Tracker” to cell phone client-side.



APP for Android system



APP for IOS system

8.2 For PC: <http://en.gps18.com/>

8.3 For Android,

You can download the app from "google play" by searching "Yi Tracker"

For Iphone,

You can download the app from "app store" by searching "Yi Tracker"

Note: the installation process prompts whether to trust this program, or whether to allow access to mobile phone location, please choose trust or allow.

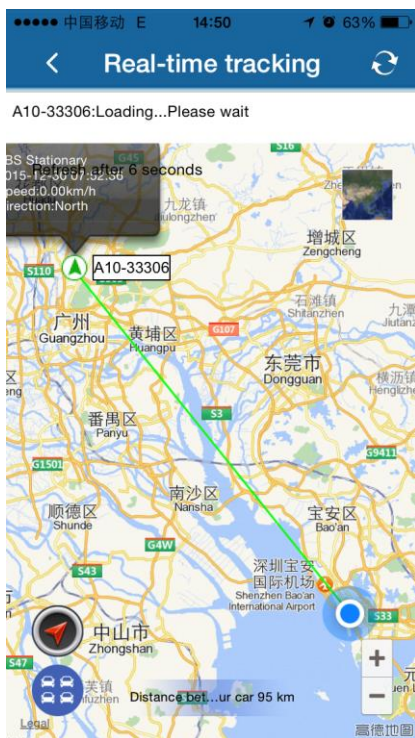
8.4 Open APP client side, choose license plate number logo in. Plat website please enter into: <http://en.gps18.com/>, license plate number please type device ID number on box(ten number), default passwords as 123456, finally click log in to the main menu. (Advice for the first time after landing please amend and remember the passwords).



Landing interface



Main menu



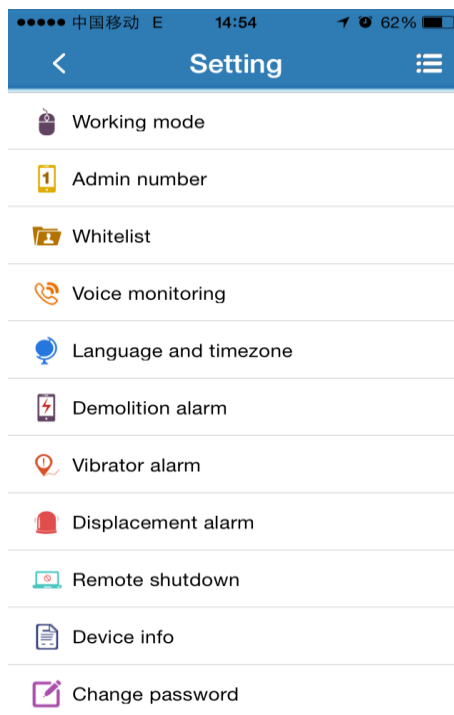
Real-time tracking



Historical Route



Set Geo-gence



Setting interface

9. Setup apn for access of network

SIM card in some countries need to setup apn before access to GPRS network, please contact the SIM card operator or check the website of the SIM card for the apn information.

	Command	Example	Reply SMS
Setup APN	pw,123456,apn,apn name,user name,password,MCCMN C#	apnname=wap.tmobil.cl, user name=wap, password=wap, MCC=730, MNC=02, then the SMS will be: pw,123456,apn,wap.tmobil.cl,wap,wap,73002#	apn:wap.tmobil.cl;user:wap;password:wap;user data:73002.

Personal information security

- Please install and use this product correctly. In order to guarantee safety use this products, please ensure that your product is not bound by people without permission. We adopt technology and management measures to ensure the safety of network information, in accordance with the law to protect users' personal information, to ensure the security of your personal information. The illegal use of this product, company will not be responsible for it.

Declare

- Welcome to use this locator, the locator contain hardware and software parts. Device need completely set to use can realize the function. Please read the instructions and safety information in this manual before operating hardware, for ensure the safe and correct use. Intelligent mobile phone software instructions please refer to the software user description.
- Please use the original factory accessories, for fear that unexpected damage. If you do not use this product as right procedure or connect incompatible parts, this behavior will lead to warranty automatic avoidance, and may even endanger the safety of you and others. To this, company does not undertake any responsibility.
- This product function realize depends on the GPS network, GSM (GPRS) network system, GIS (geographic information) system and computer system, etc. This product need to install the phone card, and open the Internet function. This product working must with good network flow, due to network failure or other force majeure causes any losses and service disruption, company does not undertake any

responsibility.

- Matters need attention

1. Do not use product soaked in water;
 2. Please leave the product away from the fire source, high temperature and extreme environment;
 3. Please pay attention to remind children don't eat products;
 4. It is forbidden to use other charging equipment;
- When power off condition and out of service zone, this product positioning function will not work.